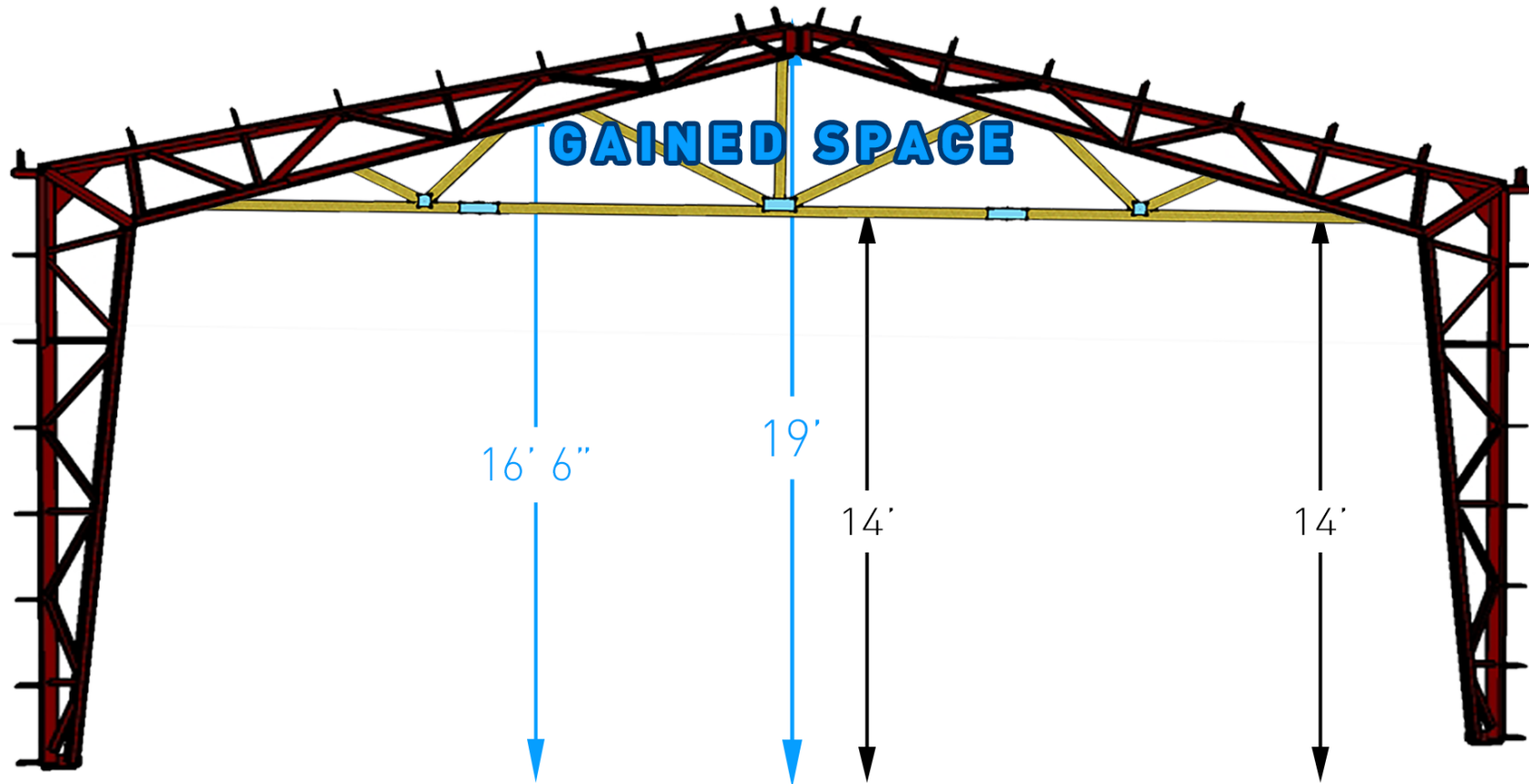


# 40'w x 14'h Eave Comparison

## Perka Hybrid vs Typical Wood Construction



For more information, diagrams, and pictures of Our Frame Models, go to <http://frames.perkabuildings.com>

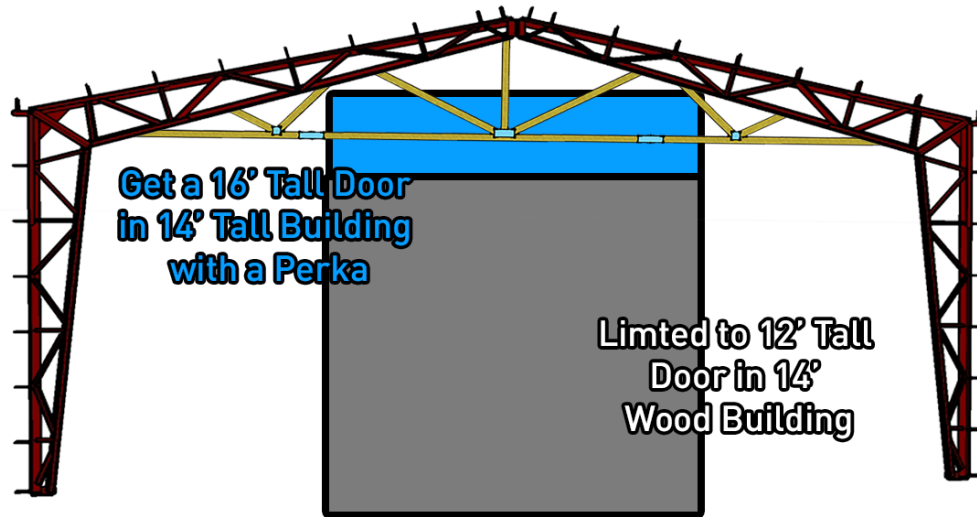
Need Help? Give us a Call... We Love To Help!

WWW.PERKABUILDINGS.COM 800.467.3752 PERKA@TEAMPERKA.COM



# Perka Hybrid vs Typical Wood Construction

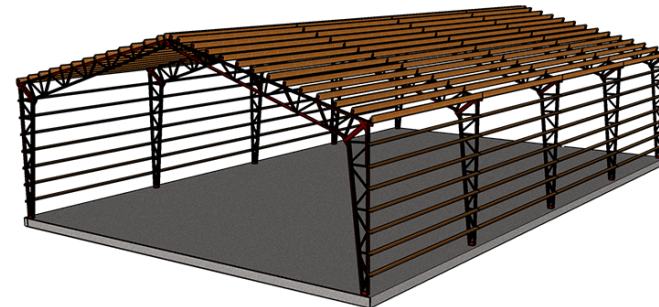
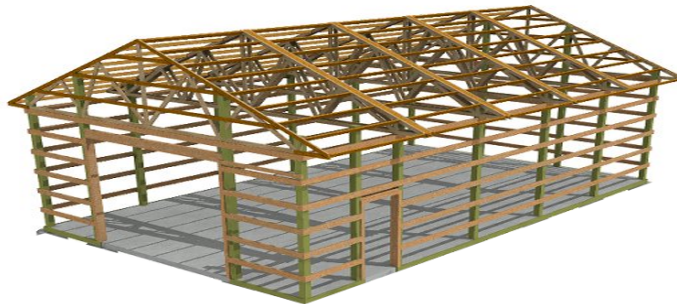
**POLE** vs **STEEL**



*It's a No Brainer*



**OVERHEAD DOORS TYPICALLY NEED 2' OF CLEARANCE; OUR NO BOTTOM CORD DESIGN ALLOWS YOU TO GET A DOOR 2' TALLER THAN YOUR SIDE WALL HEIGHT**



**FRAMES TYPICALLY ON LARGE SPACINGS, (15' - 16') AS OPPOSED TO EVERY COUPLE OF FEET, ONE OF MANY PERKA ADVANTAGES OVER WOOD**

**Need Help? Give us a Call... We Love To Help!**

**WWW.PERKABUILDINGS.COM 800.467.3752 PERKA@TEAMPERKA.COM**

